

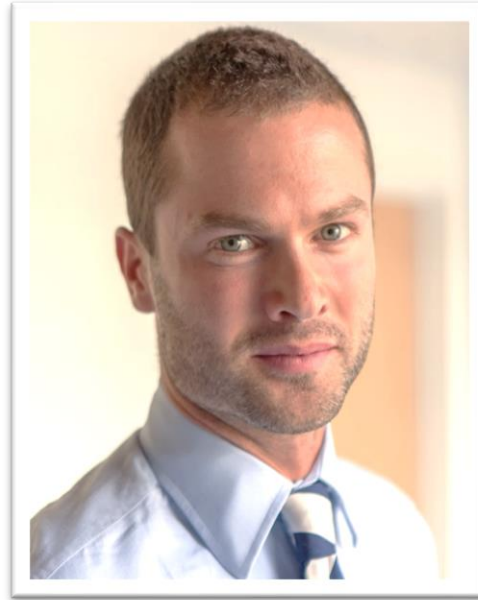
# SAFEGUARDING & CHILD PROTECTION

Mr Custance, Ms Wilkson and Mrs Fry are responsible for keeping children safe in school. Please contact them immediately if you have any concerns about the welfare or safety of a child who attends this school.

Email

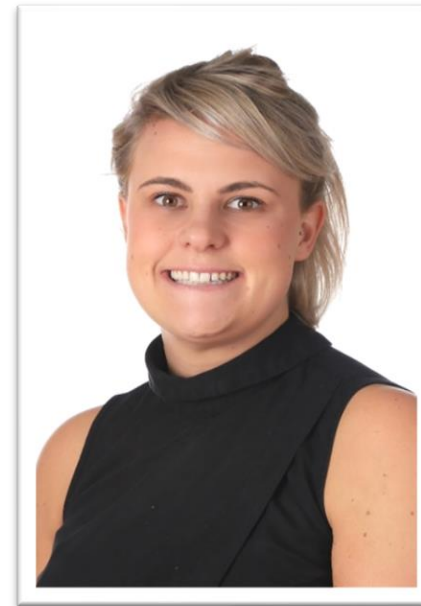
[safeguarding@wandsworth.floreat.org.uk](mailto:safeguarding@wandsworth.floreat.org.uk)  
to report concerns.

NOMINATED GOVERNOR  
FOR CHILD PROTECTION:  
**FIONA CAMPBELL**



DESIGNATED SAFEGUARDING LEAD:

**MR CUSTANCE (Headteacher)**



DEPUTY DESIGNATED SAFEGUARDING LEADS:

**MRS FRY (Deputy Head)**



**MS WILKINSON (Assistant Head)**

## Referrals to Wandsworth's Multi Agency Safeguarding Hub (MASH)

- If you believe there is an immediate need for a safeguarding response, or want to assess whether a safeguarding referral is appropriate, call the Multi-Agency Safeguarding Hub:
- Call 020 8871 6622 (9am to 5pm)
- Out of hours: 020 8871 6000 or email [mash@wandsworth.gov.uk](mailto:mash@wandsworth.gov.uk)

## How do I make a referral if I'm a professional?

- Make a 'safeguarding referral' to the Multi Agency Safeguarding Hub using the [Early Help Assessment form](#). A copy of this can be found in the Safeguarding Policy.

## Where can I find a copy of the Safeguarding Policy?

- In the School Office and on our website [www.floreatwandsworth.org.uk/policies](http://www.floreatwandsworth.org.uk/policies)

## London Borough of Wandsworth

- Head of Safeguarding Standards Service: 020 8871 7858
- Child protection lead officer and Local Authority Designated Officer (LADO): 020 8871 7226
- Safeguarding in Education Advisor: 020 8871 7961

## Multi Agency Safeguarding Hub (MASH)

Wandsworth Town Hall, Wandsworth High Street  
London, SW18 2PU

- The reception is open to the public 9.30am to 4.30pm
- [mash@wandsworth.gov.uk](mailto:mash@wandsworth.gov.uk)

# REPORTING CONCERNS

If you have a concern about a child, a member of staff or any member of this community then please contact one of the Safeguarding & CP Team immediately.

You must contact a member of the team using the following systems:

1. Speak to the DSL or Deputy DSL in person.
2. Email [safeguarding@wandsworth.floreat.org.uk](mailto:safeguarding@wandsworth.floreat.org.uk) with your concern or report giving the relevant details. This email will go directly to all Senior Leaders.

