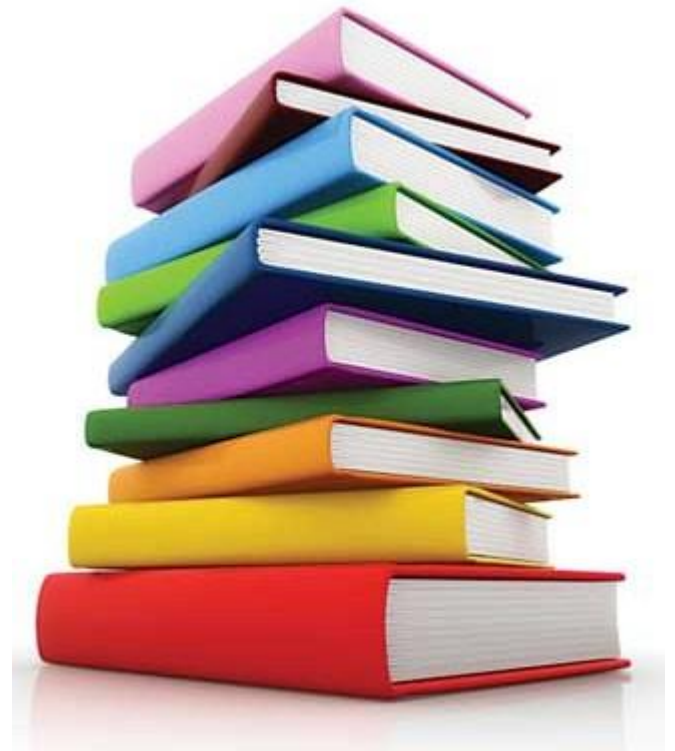


Year 2 Family Learning

Focus: Reading



What I can see...	I wonder...	What I can infer...

Every day after school Paul sits on his doorstep and takes off his muddy boots. Understandably, his parents will have a fit if the boots make it into the house. He then takes off his sweaty clothes and puts them in the huge pile by the washing machine before going upstairs to have a bath. Annoyingly, Kim is in the bathroom so he has to wait.

Examples of inference questions:

1. Where has Paul been?
2. Why might his parents 'have a fit' if his boots make it into the house?
3. What time might it be?
4. How old might Paul be?
5. How many people could live in Paul's house?
6. Who might Kim be?
7. Why do you think Paul left his clothes by the washing machine?
8. Which house do you think Paul might live in?

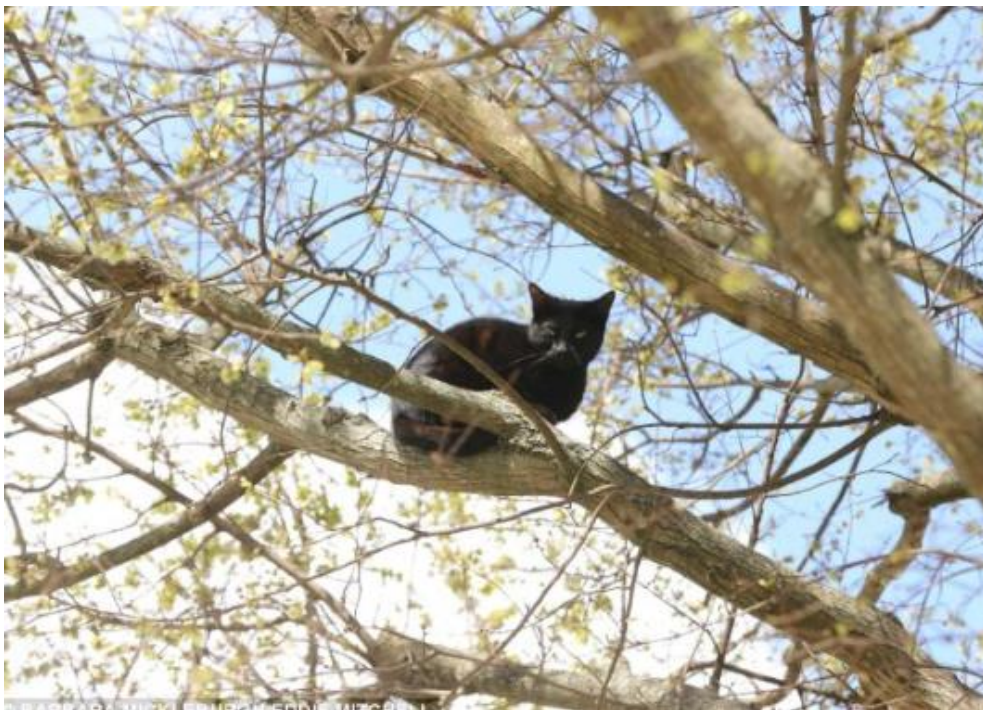
Use 'because' to explain your ideas.



General inference questions to use at home.

- What words make you think that? Why?
- How do you feel about ____? Why?
- Can you explain why ____?
- At the end of the story the main character is feeling _____. Does this surprise you?
- What does this tell you about what ____ was thinking?
- Do you think this is true/untrue? Why do you think this?
- What do you think might happen next?
- If you were the main character what would you do next?
- How might you respond?
- How might _____ feel about ____? What advice would you give that character?
- Why do you think _____ has done _____?
- Who might help ____? If it was you, who would you ask to help?
- Do you think that ____ was a good choice? Why?
- Was ____ fair? Was ____ honest?
- What does the word ____ make you think of? Have you heard this word before? When? Where?
- Which word means the same as the word _____?

Picture 1



Picture 2

