

# Floreat Education



## Travel Plan

### FLOREAT WANDSWORTH PRIMARY SCHOOL

ADOPTED BY: LGB

DATE of ADOPTION: September 2015

DATE of LAST REVIEW: December 2017

REVIEWED BY: Headteacher

DATE RATIFIED BY FEAT BOARD:

NEXT REVIEW DATE: December 2018

### School Overview

<b>Borough</b>	<b>Wandsworth</b>
<b>DFE number</b>	212/2006
<b>School type</b>	Primary
<b>School category</b>	Academy
<b>Age range</b>	3-7
<b>Number of students</b>	207
<b>Number of staff</b>	30
<b>Site opening hours</b>	6am to 7pm
<b>Students school hours</b>	8.30am to 3.30pm
<b>Breakfast club time</b>	7.45am to 8.30am
<b>After School Club time</b>	3.30pm to 6pm
<b>Car Parking spaces</b>	8
<b>Disabled Car Parking spaces</b>	1
<b>Bike /scooter sheds</b>	2
<b>Car spaces for parents</b>	0
<b>Opportunities for parents to park near school</b>	Off street parking available
<b>Opportunities for staff to cycle to school</b>	Bike storage available

## 1. Mission Statement

We will enable children to flourish in school by giving them a knowledge-rich academic education and developing their character strengths and virtues. Our pupils will learn how to work hard and study well, and also to be good and to do good for others. This will set them up for a future of success and wellbeing, whatever they choose to do in their lives.

## 2. Purpose of Policy Statement

By September 2022, the school will be a 420 place primary school for children aged 4-11, plus 39FTE students in nursery school.

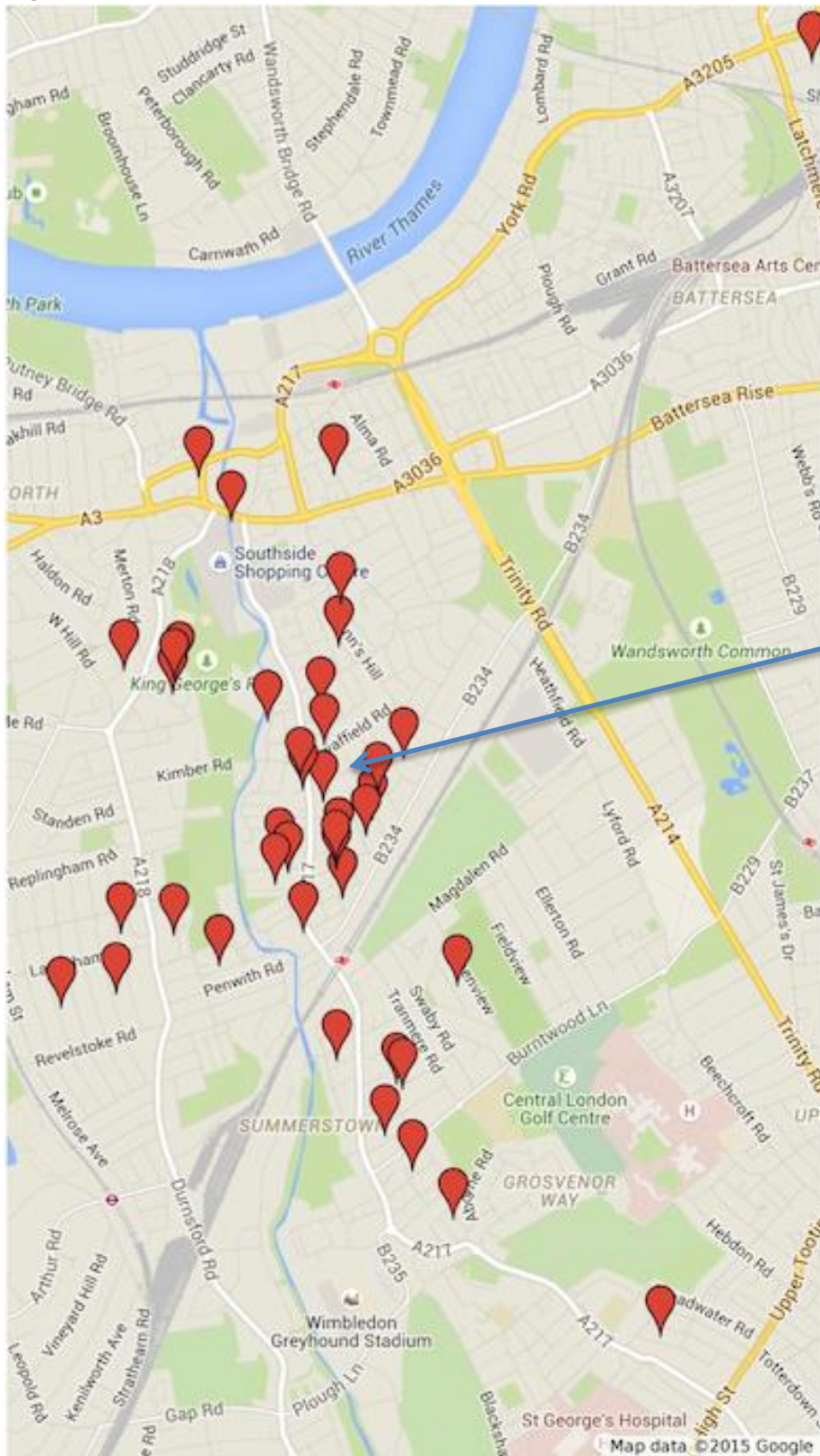
This Travel Plan is designed to enable staff, pupils and parents to make informed and sustainable decisions about how they travel to and from school. The intended result of this plan is that the school community will be able to travel to and from the school easily, safely, and with a minimal impact upon the environment. Given the relative ease of access to the school via various means of public transport, it is foreseen that many pupils and staff will opt to use public transport or walking to travel to school. It is hoped that this will limit the scale and scope of congestion and traffic pollution in the immediate vicinity.

## 3. School Site

Floreat Wandsworth is located at 305 Garratt Lane (A217), on an arterial route between Wandsworth Town roughly 1.5 miles to the north and Earlsfield roughly 0.5 miles to the south. The site itself is bounded by Garratt Lane on its western edge, Farlton Lane to the south, and Oakshaw Road to the east, with residential dwellings and shops to the north. Figure 1 shows the postcode locations of applicants to the school.

The school comprises of a three storey block with integrated outdoor play space, two large classrooms for each year group, a large library space, a main and small hall, a bike and scooter store, and separate access and playgrounds for EYFS children. The school site will be open 6am-7pm Monday to Friday for staff, and the school day will start at 8.30am, and finish at 3.30pm. There is a breakfast club (7.45am to 8.30am) for early arrivals before the start of school and an after-school club (3.30pm to 6pm) for those being picked up late at the end of the school day. The effect of these clubs will be to spread the arrival and departure of pupils, parents and staff across a wider time frame, thereby limiting congestion and disruption in the immediate vicinity of the site.

Figure 1: map of postcodes of admitted pupils (as of September 2015)



School's location

## 4. How to travel to Floreat Wandsworth School

### 4.1 Access to the site

There are three main points of access for the school site.

- Visitors will enter through the **School Office Entrance** on Garratt Lane.
- Reception and Nursery children enter and exit from the **Playground Entrance** off Farlton Rd.
- From September 2016 children and parents will be able to enter from **KS1 Entrance** off Garratt Lane.

### Pedestrian

Despite having no immediate access via pedestrian crossing, the site has a good level of accessibility for pedestrians. There are dropped kerbs at crossing points to aid those with mobility issues, but there is no tactile information provided, which may limit accessibility for those with sensory impairments. There is a major signalised crossing about 200m to the north, where Kimber Road and Swaffield Road meet Garratt Lane. This is depicted in Figure 2A.

**Figure 2A: the junction of Kimber Road, Swaffield Road and Garratt Lane**



## Car parking

There are six parking spaces available onsite for school staff and visitors, of which one is a disabled bay. There is, therefore, no dedicated car parking provision for parents for picking up and dropping off. Car parking for parents of pupils in nearby roads (e.g. Farlton Lane) is subject to pay and display and/or residential restrictions 9.30am-4.30pm, Monday to Friday, and is fairly limited. Because of the timing of the school day, these restrictions will affect parents picking children up after school more than it will affect them as they drop children off for school.

## Bus

Buses run up and down Garratt Lane, with bus stops for both north- and southbound buses within a three-minute walk of the school (approximately 200m) along Garratt Lane. The relevant northbound stop is Stop J (Henry Prince Estate), near Haldane Place, and the relevant southbound stop is Swaffield Road. The 44 and 270 buses serve each of these two stops. Neither stop has a real-time electronic display, but both have timetables, shelters and benches. Figure 2B shows the Swaffield Road stop and Figure 2C shows the Henry Prince Estate stop. Table 2.1 shows the timetables for the two buses in both directions.

**Figure 2B: Swaffield Road stop**



**Figure 2C: Henry Prince Estate stop**



**Table 2.1: weekday bus timetables for both stops**

Route Number	Route	First bus / last bus (Swaffield Road stop)	Frequency, per direction
44	Grosvenor Gardens/Victoria Street – Tooting Station	0525/0040	7-11 mins
270	Putney Bridge Station – Madeira Road	0508 / 0029	9-12 mins
Route Number	Route	First bus / last bus (Henry Prince Estate stop)	Frequency, per direction
44	Tooting Station –Victoria Station/ Grosvenor Gardens	0515/0031	6-10 mins
270	Three Kings Pond – Putney Bridge Station	0528 / 0020	8-12 mins

## Cycling

According to TfL Cycling Guide 10, there are a number of safe cycling routes in the local area and ‘greenways’ through local parks that pupils may wish to use to travel to school. Floreat Wandsworth is committed to complying with Wandsworth Council’s guidelines on promoting safe cycling, and we will look into providing Bikeability training (subject to demand) in line with this commitment. There are spaces to park around 16-20 bicycles and around 40 scooters across two bike/scooter sheds on the outdoor play space.

## Tube and Rail

The nearest underground station to the school is Southfields (District Line), which is approximately 0.9 miles west of the school, or a 14-18 minute walk. This is worth mentioning because while unlikely to be a major transit point for pupils and parents, it may be a viable option for members of staff. The nearest rail station is Earlsfield, which is approximately 0.4 miles south of the school, or a 7-10 minute walk. The station is one stop from Clapham Junction on the Woking/Guildford and Epsom/Dorking lines, and upwards of 10 trains an hour pass through in both directions. Earlsfield’s four platforms are all accessible by lift, and there is a ticket office located in the ground-level concourse, as well as six self-service ticket machines.

## 3. Promoting walking to school

Floreat Wandsworth wishes to do all that it can to encourage as many families as possible to walk to school. Walking to school is one of the easiest ways to improve your health and your children’s health. It’s also free, great for the environment, and sociable. According to Living Streets, the UK’s premier street safety charity, 90% of parents who

walk their children to school recognise the journey's importance for them to socialise with their children. Over a third stated that the journey to school is where they find out the most about their child's life.

Through participating in walking schemes, e.g. 'Walk once a Week' and 'Walk to School Week' we aim to highlight the importance of walking to school to pupils and their families. We also aim to incorporate Wandsworth Council's school Travel Plan initiatives for walking into our travel plan in order to facilitate this endeavour.

We actively encourage children to bring their **scooter** or **bike** to make the journey that little bit more enjoyable! The school has provided children with two covered sheds in which to keep their bike or scooter safe until the end of the day.

Why should we walk to school?

- ✓ It's healthy - Children need at least 60 minutes of physical activity every day.
- ✓ The journey to and from school is an ideal time for children to be active.
- ✓ It's educational - Walking to school can help your child build independence, road safety and social skills.
- ✓ In a study by Living Streets, 84 per cent of the children who walked to school often meet up with classmates on the way to school.
- ✓ It'll save you money - Walking to school instead of driving saves, on average, £400 per year. (Living Streets)
- ✓ It's better for the environment - One person switching five journeys of fewer than 2 km a week from the car to walking would reduce their carbon footprint by 86kg a year.

#### 4. Consultation / travel survey results

Accurate travel information will be collected for pupil and staff travel. Pupils, staff and parents will also be consulted as appropriate on travel concerns, ways of improving site facilities, education for sustainability (including road safety teaching), and possible initiatives to encourage more sustainable travel.

The collected survey data would, throughout the life of the plan, be compared to previous surveys/original travel plan survey data to detail progress in increasing sustainable travel to the school.

The first survey undertaken was the 'baseline survey', which was completed within 6 months of opening the school. Both staff and pupils were required to complete the survey and the following tables are populated by the survey results.



#### 4.1 Annual travel survey results

The pupil and staff travel surveys will be repeated every academic year and the results will be entered in the following tables in order to provide an indication of whether the Travel Plan is proving to be effective in terms of encouraging a positive modal shift.

Floreat Wandsworth, <b>Pupil Survey Results in %</b>								
Year	Walk	Park and walk	Cycle/Scooter	Car	Car Share	Bus	Train	Tube
2015	66		1	26		4	3	
2016	70		1	20		9		
2017/18	48		35	15	1	1		
2018/19								
Floreat Wandsworth, <b>Staff Survey Results in %</b>								
Year	Walk	Park and walk	Cycle	Car	Car Share	Bus	Train	Tube
2015	5		5	25	15	30	15	5
2016	10		5	25	25	35		
2017/18	17		3	40		33	7	
2018/19								

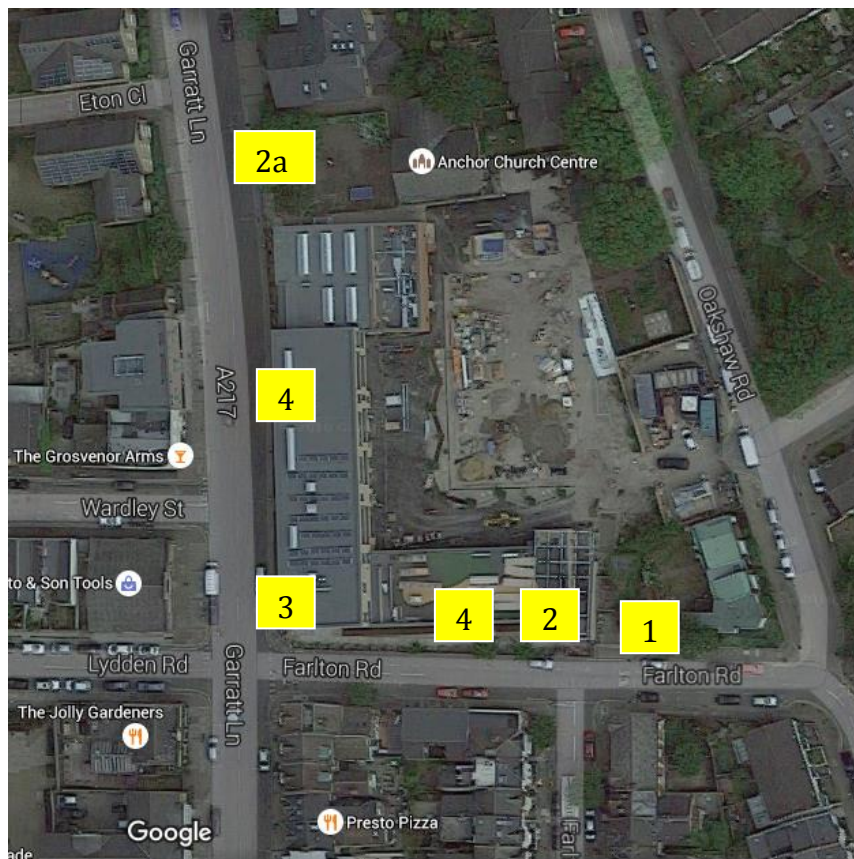
#### 4.4 Parent/governor consultation/involvement

In the majority of cases, parents will make the decision on how their child travels to school. The Travel Plan process can be used to inform and change the decisions made in relation to the choice of travel modes. It cannot be prescriptive but aims to encourage the use of healthier and more sustainable forms of transport.

Newsletters will be issued and special parent assemblies and working groups will be held to highlight key issues in relation to the school site, the journey to school and planned initiatives to encourage sustainable travel. Any issues regarding travel issues will be fed through from parents/pupils to governors and the staff member responsible for managing the Travel Plan.

## 5. Key issues and concerns

The issues and concerns, as identified by pupils, staff, and parents through the consultation process as well as other known concerns are detailed below.



Number on map	Issue	Solution	Timescale	Status
1	Congestion at 8.30am and 3.30pm leading to safety issues.	Arrangements made to bring children further onto playground away from Farlton Rd	From September 2017	Complete (Gate opened at 8.20am and alternative plans made for lining up to ease congestion)
2 & 2a	Congestion on Farlton Rd when Year 1 children join FW.	Manned entrance for Nursery/Reception children at 2  Manned entrance for Year 1/2 children at 2a	From September 2017	To be reviewed
3	Unsafe road crossing	Zebra crossing / Island crossing	Council to advise	Raised with council
4	Unsafe car drop off on both sides of school.	Zigzag lines and signs needed.	Council to advise	Complete (August 2016)

## 6. Achievements from previous travel plan

As a result of the previous travel plan and key issues and concerns raised in section 5, the following actions were undertaken to improve the travel and safety for pupils.

- The congestion at the Farlton Road entrance and related safety concerns were addressed by opening the gate on Farlton Road earlier (from 8:20am) and establishing new lining up points for pupils at 8:30am and pick up points for 3:30pm. This resulted in less congestion with pupils and their parents/carers moving further into the school playground, away from the Farlton Road entry point at 8:30am and 3:30pm.
- Concerns over unsafe car drop off points on both Farlton Road and Garratt Lane (as detailed in Section 5) were addressed by contacting the Council to request zig-zag lines. The Council consequently implemented zig-zag lines on both sites in August 2016, improving safety for pupils.

## 7. Objectives, targets and action plan

The objectives, targets and action plan for this Travel Plan are set out in the table below. The objectives and targets will be reviewed and finalised following annual travel surveys, in order to ensure that they are realistic.

## 8. Action Plan 2018

<b>Target(s)</b>	<b>Task(s)/ action(s) to achieve target(s)</b>	<b>Named person(s) responsible for this task</b>	<b>Implementati on date (month &amp; year)</b>	<b>Other individuals or groups involved</b>	<b>Progress update (State where task/action are completed &amp; reasons why tasks/actions not been met)</b>
Make Travel Plan available on school's web site	Publish Travel Plan	Matthew Custance	March 2018		
Zigzag Line Banners in place at both pedestrian entrances to ensure residents / parents do not park on marked areas.	Pupils to design posters and MC to commission banners.	Matthew Custance	March 2018		
Undertake annual travel survey for staff and pupils.	Draft survey and make time to carry out.	Matthew Custance	March 2018		
Enter Travel Plan data FW travel plan database.	Collect data from annual travel survey.	Matthew Custance	March 2018		
Promote health and fitness benefits of active travel to school to pupils through the school's curriculum e.g. science, P.E. and using Sustrans' free resources for schools.	Include in curriculum documents.	Matthew Custance	March 2018		

## 8. Monitoring and review

As indicated earlier, annual travel surveys will be completed in October of every year at which time an annual review of the Travel Plan will be undertaken.

Should any developments or problems in education or transport provision arise in between the planned annual reviews, the travel arrangements of the school would be adjusted accordingly on an interim basis and then the situation reviewed at the time of the next scheduled monitoring exercise.

The school will undertake to monitor progress of the Plan as stated and will actively work to encourage more members of the school community to travel to school by sustainable means.